

DRAWING REGISTER

DRAWING NUMBER			SHEET NAME	REV. No.	REV. DATE
14066.5	DA	L000	COVER PAGE	F	14/12/22
14066.5	DA	L001	SITE PLAN	F	14/12/22
14066.5	DA	L002	PRECEDENTS	C	16/9/22
14066.5	DA	L003	LANDSCAPE PLAN	F	14/12/22
14066.5	DA	L004	STREET DETAIL	D	3/11/22
14066.5	DA	L005	FINISHES PALETTE	C	16/9/22

landscape development application

ASTRA AEROLAB

GREATER NEWCASTLE AEROTROPOLIS Pty Ltd
LOT 109 CABBAGE TREE ROAD, WILLIAMTOWN, 2318



SITE PLAN

ASTRA AEROLAB

L001



LEGEND	
	PROPOSED ENDEMIC TREE SPOTTED GUM.
	PROPOSED SHADE TREE BRUSHBOX.
	PROPOSED FEATURE TREE OLD MAN BANKSIA.
	TURF
	STEEP TURF EMBANKMENT
	SLIGHT TURF EMBANKMENT
	MASS PLANTING
	GRAVEL / DECO GRANITE
	PAVING TO PATHWAYS CCS 'SMOKEY BLUE'
	FEATURE PAVING TO ENTRANCES URBANSTONE 'RIVER TOPAZ' (SHOTBLAST)
	CONCRETE PATHWAYS, REFER CIVIL
	MOS 'OXLEY' BIKE RACKS
	QUATRO DESIGN ASSORTED 'FLINDERS' IN KALGOOLIE FINISH, REFER PLANS.
	CORTEN STELL EDGING.

F	14/12/22	CARPARK TREE SPECIES CHANGE
E	13/12/22	TREE SUBSTITUTION
D	3/11/22	ARCH REALIGNMENT & ADDITIONAL TREES
C	16/9/22	CARPARK UPDATE
B	15/9/22	ISSUE FOR DA
A	9/9/22	ISSUE FOR REVIEW
REV	DATE	COMMENTS

PROJECT:
ASTRA AEROLAB

SITE:
**LOT 109 CABBAGE TREE ROAD,
WILLIAMTOWN, 2318**

CLIENT:
**GREATER NEWCASTLE
AEROTROPOLIS Pty Ltd**

14066.5-DA_Astra Aerolab Industrial Site vwx 14/12/22

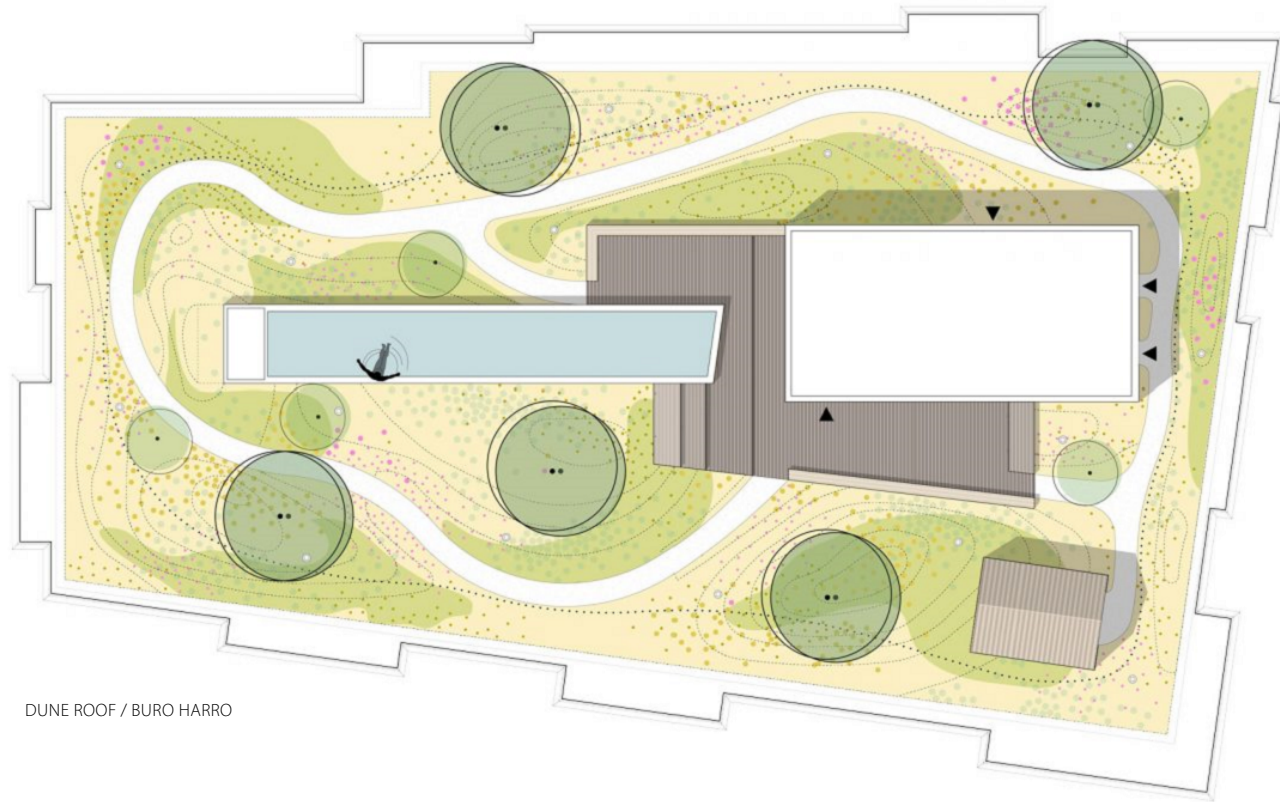
DRAWN: ER / GF DATE: 05-09-2022 SCALE: @A3

JOB NUMBER: 14066.5 DA L001 F PHASE: DWG No: REV:

LANDSCAPED AREA CALCULATIONS :	
	Total
Deep Soil Planting	1550 m ² (20.9%)
Carpark Shading	31.03%

PRECEDENTS | L002

ASTRA AEROLAB



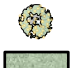









DUNE ROOF / BURO HARRO



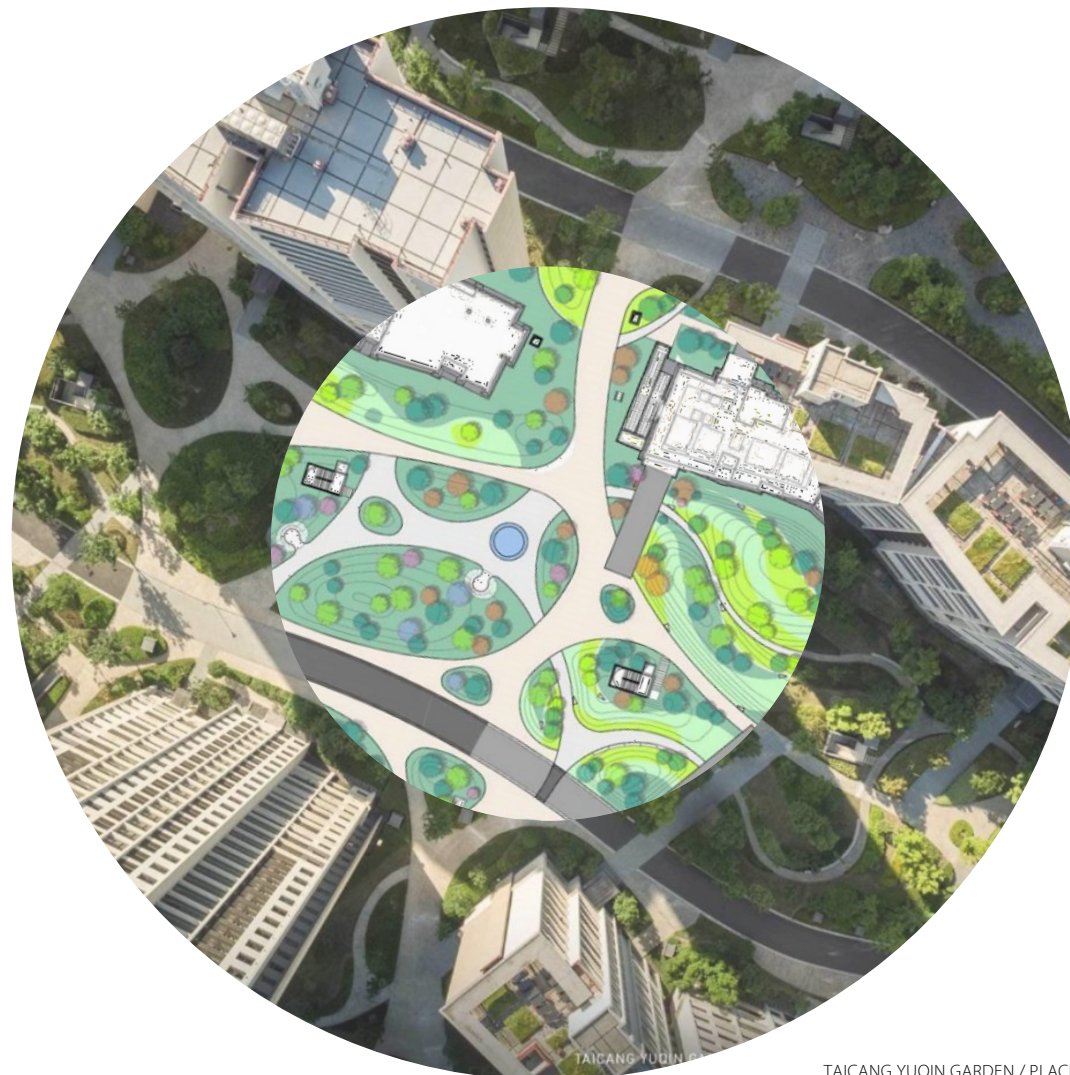
AEON MALL MIYAZAKI – HINATA TERRACE / STGK INC.

LEGEND

-  PROPOSED, ENDEMIC TREE
SPOTTED GUM.
-  PROPOSED SHADE TREE
BRUSHBOX.
-  PROPOSED FEATURE TREE
OLD MAN BANKSIA.
-  TURF
-  STEEP TURF EMBANKMENT
-  SLIGHT TURF EMBANKMENT
-  MASS PLANTING
-  GRAVEL / DECO GRANITE
-  PAVING TO PATHWAYS
CC'S 'SMOKEY BLUE'
-  FEATURE PAVING TO ENTRANCES
URBANSTONE 'RIVER TOPAZ'
(SHOTBLAST)
-  CONCRETE PATHWAYS. REFER CIVIL.
-  MOS 'OXLEY' BIKE RACKS
-  QUATRO DESIGN ASSORTED 'FLINDERS'
IN KALGOOLIE FINISH. REFER PLANS.
-  CORTEN STEEL EDGING.



DOWNTOWN COMMONS / HDLA



TAICANG YUQIN GARDEN / PLACEMEDIA

C	16/9/22	CARPARK UPDATE
B	15/9/22	ISSUE FOR DA
A	9/9/22	ISSUE FOR REVIEW
REV	DATE	COMMENTS

PROJECT:

ASTRA AEROLAB

SITE:

**LOT 109 CABBAGE TREE ROAD,
WILLIAMTOWN, 2318**

CLIENT:

**GREATER NEWCASTLE
AEROTROPOLIS Pty Ltd**

14066.5-DA_E_Astra Aerolab Industrial Site.vwx 14/12/22

DRAWN: ER / GF DATE: 05-09-2022 SCALE: @A3

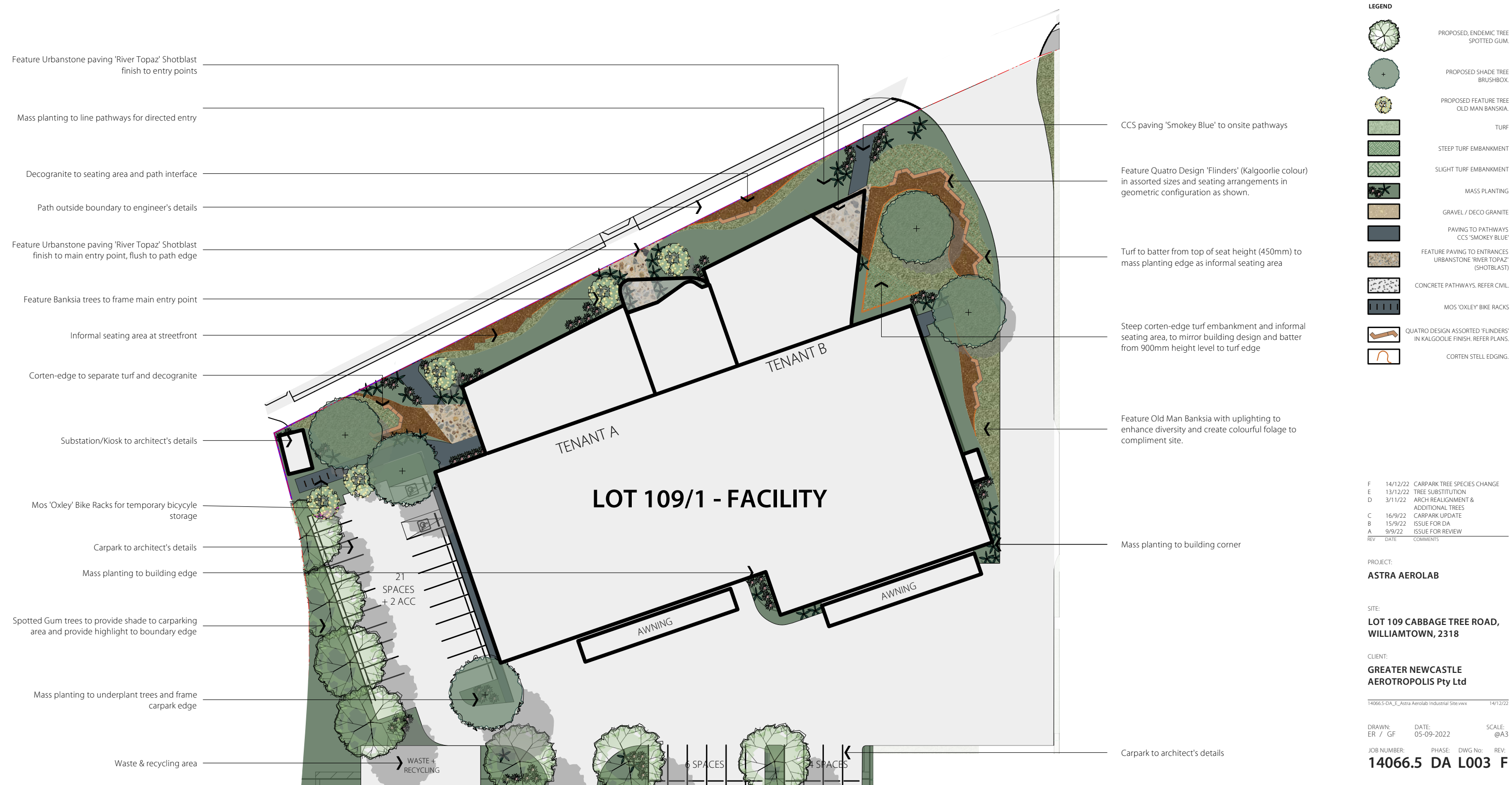
JOB NUMBER: 14066.5 DA L002 C PHASE: DWG No: REV:

terras
landscape architects

412 KING STREET NEWCASTLE NSW AUSTRALIA 2300
TERRAS.COM.AU PH: 49 294 926 FAX: 49 263 069

LANDSCAPE PLAN | L003

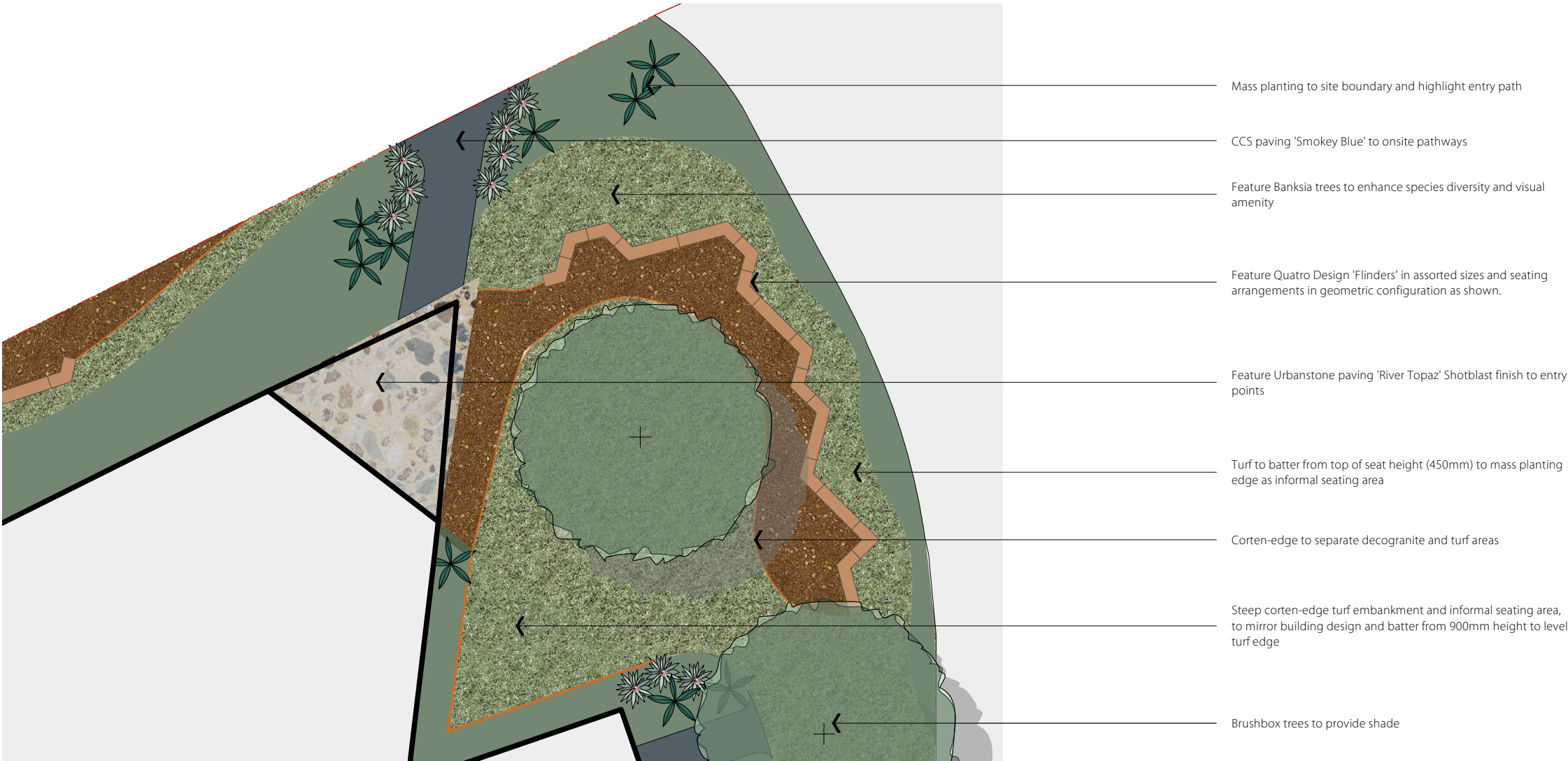
ASTRA AEROLAB



STREET DETAIL

ASTRA AEROLAB

L004



LEGEND	
	PROPOSED, ENDEMIC TREE SPOTTED GUM.
	PROPOSED SHADE TREE BRUSHBOX.
	PROPOSED FEATURE TREE OLD MAN BANKSIA.
	TURF
	STEEP TURF EMBANKMENT
	SLIGHT TURF EMBANKMENT
	MASS PLANTING
	GRAVEL / DECO GRANITE
	PAVING TO PATHWAYS CCS 'SMOKEY BLUE'
	FEATURE PAVING TO ENTRANCES URBANSTONE 'RIVER TOPAZ' (SHOTBLAST)
	CONCRETE PATHWAYS. REFER CIVIL.
	MOS 'OXLEY' BIKE RACKS
	QUATRO DESIGN ASSORTED 'FLINDERS' IN KALGOOLIE FINISH. REFER PLANS.
	CORTEN STELL EDGING.

D	3/11/22	ARCH REALIGNMENT & ADDITIONAL TREES
C	16/9/22	CARPARK UPDATE
B	15/9/22	ISSUE FOR DA
A	9/9/22	ISSUE FOR REVIEW
REV	DATE	COMMENTS

PROJECT:
ASTRA AEROLAB

SITE:
**LOT 109 CABBAGE TREE ROAD,
WILLIAMTOWN, 2318**

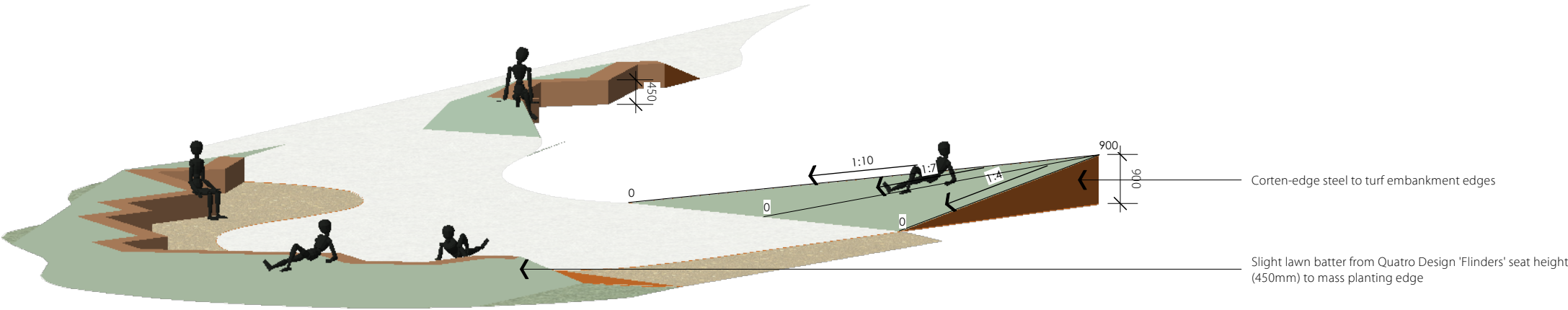
CLIENT:
**GREATER NEWCASTLE
AEROTROPOLIS Pty Ltd**

14066.5-DA_E_Astra Aerolab Industrial Site.vwx 14/12/22

DRAWN: ER / GF DATE: 05-09-2022 SCALE: @A3

JOB NUMBER: 14066.5 DA L004 D PHASE: DWG No: REV:

1 STREET DETAIL PLAN
L004 Scale: 1:200

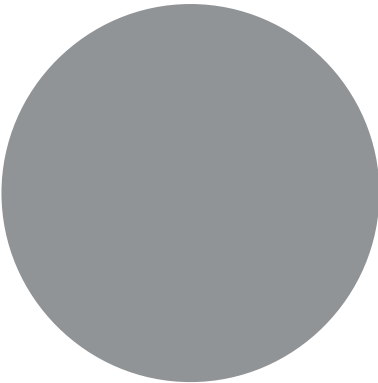


2 PERSPECTIVE OF EMBANKMENT SEATING
L004 Scale: 1:100

FINISHES PALETTE

ASTRA AEROLAB

L005



CCS Paving 'Smokey Blue'



Urbanstone Paving 'River Topaz'
(Shotblasted)



Decogranite



Corten Steel



Spotted Gum



Mos 'Oxley' Bike Rack



Assorted Quatro Design 'Flinders'
(Kalgoorlie Long Bench 120° Return with seat
attachment shown)



Bottlebrush 'Better John'



Grevillea 'Superb'



Brushbox

LEGEND

PROPOSED, ENDEMIC TREE
SPOTTED GUM.

PROPOSED SHADE TREE
BRUSHBOX.

PROPOSED FEATURE TREE
OLD MAN BANKSIA.

TURF

STEEP TURF EMBANKMENT

SLIGHT TURF EMBANKMENT

MASS PLANTING

GRAVEL / DECO GRANITE

PAVING TO PATHWAYS
CCS 'SMOKEY BLUE'

FEATURE PAVING TO ENTRANCES
URBANSTONE 'RIVER TOPAZ'
(SHOTBLAST)

CONCRETE PATHWAYS, REFER CIVIL

MOS 'OXLEY' BIKE RACKS

QUATRO DESIGN ASSORTED 'FLINDERS'
IN KALGOOLIE FINISH, REFER PLANS.

CORTEN STEEL EDGING.

TREE SCHEDULE

ID	Botanical Name	Common Name	Pot Size	Scheduled Size
BaSe	Banksia serrata	Old Man Banksia	75Lt	15.0 x 6.0
CorMa	Corymbia maculata	Spotted Gum	300Lt	30.0 x 10.0
LoCo	Lophostemon confertus	Brush Box	200Lt	10.0 x 15.0

PLANT SCHEDULE

ID	Botanical Name	Common Name	Pot Size	Scheduled Size
CaVBJ	Callistemon viminalis 'Better John'	Callistemon 'Better John'	5L	1.0 x 1.0
CaAp	Carex appressa	Tall Sedge	2.5L	1.0 x 1.0
CaGI	Carpobrotus glaucescens	Coastal Moonflower, Pigface, Iceplant	2.5L	0.3 x 3.0
CorAI	Correa alba x reflexa	Correa 'Coconut Ice'	5L	2.0 x 1.2
DiCa	Dianella caerulea	Paroo Lily, Blue Flax-lily	5L	1.0 x 1.0
DoEx	Doryanthes excelsa	"GyMEA Lily, Giant Lily"	25L	3.0 x 3.0
EreNiv	Eremophila nivea	silky eremophila, emu bush	5L	1.0 x 0.9
FiNo	Ficinia nodosa	knobby club-rush	5L	1.0 x 1.0
GrSu	Grevillea x 'Superb'	Superb Grevillea	5L	2.0 x 1.5
HaVi	Hardenbergia violacea	Purple Twining-pea, False Sarsaparilla	2.5L	0.3 x 3.0
LoLo	Lomandra longifolia	Spiny-headed Mat-Rush	5L	1.0 x 2.0
LoLoT	Lomandra longifolia 'Tanika'	Spiny-head mat rush, spiky-headed mat-rush, basket grass	5L	1.0 x 2.0
WesFru	Westringia fruticosa	Coastal Rosemary, coastal westringia	2.5L	0.5 x 1.0



Old Man's Banksia

C	16/9/22	CARPARK UPDATE
B	15/9/22	ISSUE FOR DA
A	9/9/22	ISSUE FOR REVIEW
REV	DATE	COMMENTS

PROJECT:
ASTRA AEROLAB

SITE:
LOT 109 CABBAGE TREE ROAD,
WILLIAMTOWN, 2318

CLIENT:
GREATER NEWCASTLE
AEROTROPOLIS Pty Ltd

14066.5-DA_E_Astra Aerolab Industrial Site vwx 14/12/22

DRAWN: ER / GF DATE: 05-09-2022 SCALE: @A3

JOB NUMBER: 14066.5 PHASE: DA DWG No: L005 REV: C